



RSA Secured Implementation Guide

Last Modified: March 12, 2008

Partner Information

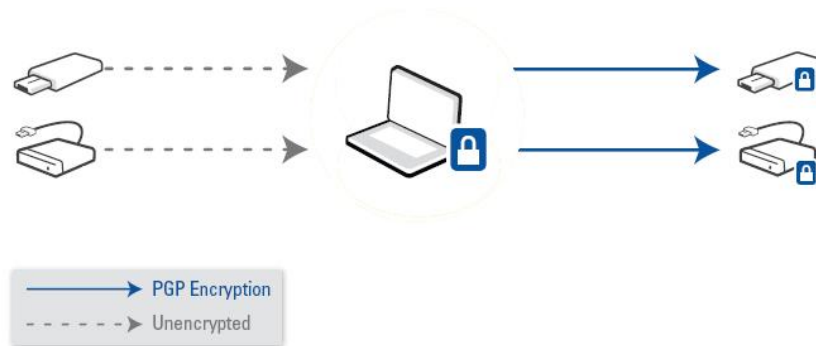
Product Information	
Partner Name	PGP
Web Site	www.pgp.com
Product Name	PGP Desktop
Version & Platform	9.8
Product Description	PGP WDE (Whole Disk Encryption) provides comprehensive, non-stop disk encryption, enabling quick, cost-effective protection for data on PCs, laptops, and removable media. The encrypted data is continuously safeguarded from unauthorized access, providing strong security for intellectual property, customer and partner data, and corporate brand equity.
Product Category	Disk/File Encryption



Solution Summary

RSA Authenticators and PGP WDE combine seamlessly to provide end-users with a single form factor for laptop and desktop encryption. The PGP solution provides end-users with Preboot authentication, file and disk encryption and Outlook mail encryption for PGP/MIME messages.

Partner Integration Overview	
Interoperable through RSA Authentication Client	Y
Pre-Boot Authentication	Y
If Pre-Boot, which tokens are supported?	SD800



Comprehensive defense for local and remote media.

Product Configuration for Interoperability

Interoperability between the RSA Authenticators and PGP WDE requires the installation of the RSA Authentication Client and PGP WDE.

Before You Begin

This section provides instructions for integrating the RSA Authenticators with PGP Whole Disk Encryption. The document is not intended to suggest optimum installations or configurations.

It is assumed that the reader has both working knowledge of all products involved, and the ability to perform the tasks outlined in this section. Administrators should have access to the product documentation for all products in order to install the required components.

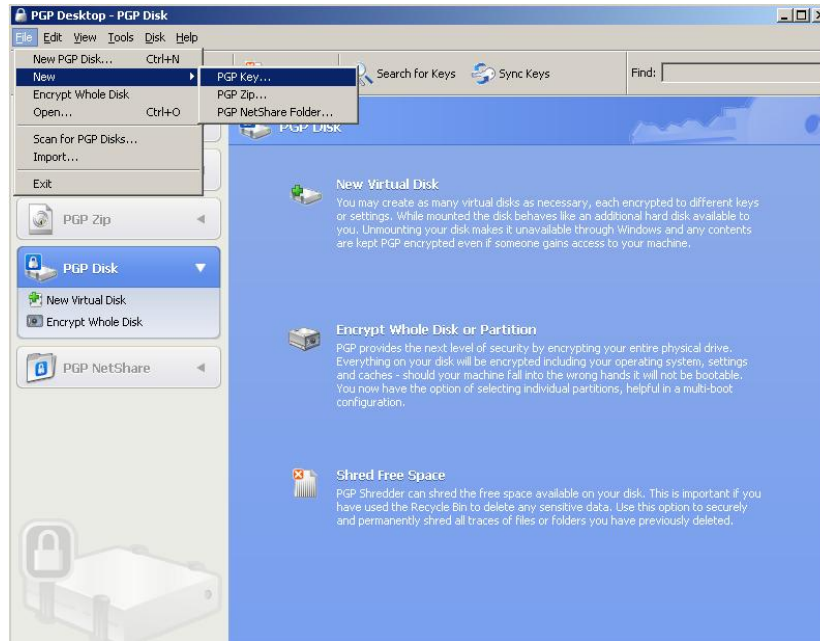
All vendor products/components must be installed and working prior to the integration. Perform the necessary tests to confirm that this is true before proceeding.

RSA Authenticator Configuration

Before attempting the PGP WDE installation, please ensure you have properly installed the correct RSA Authenticator client. Please consult the appropriate RSA documentation for client installation details.

Provision the RSA Authenticator

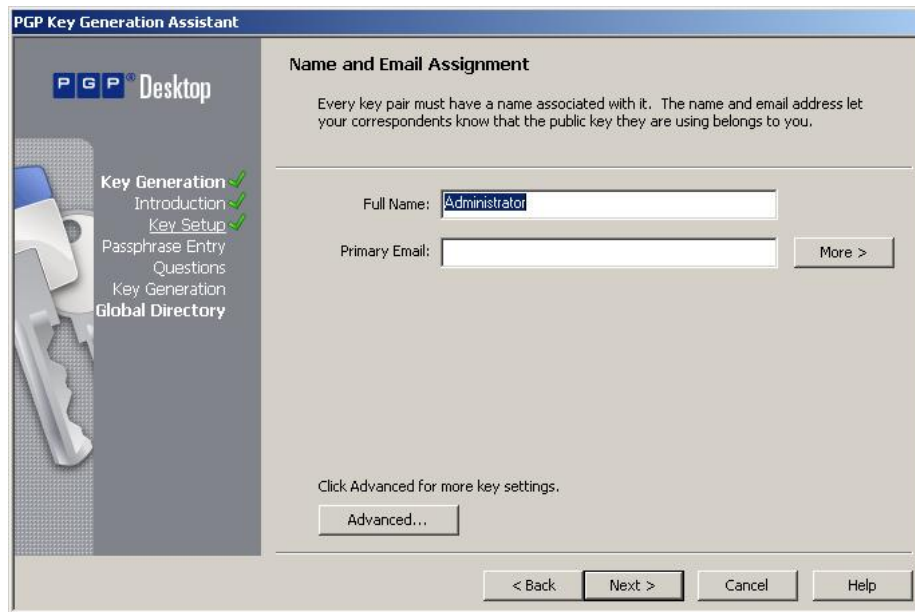
1. Open the PGP Desktop Whole Disk Encryption console and create a new PGP Key.



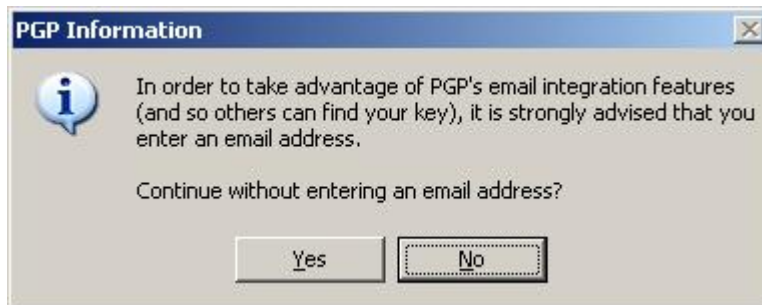
2. If the correct option is selected the following screen is displayed. Insure that the check box is selected next to the text "Generate Key on Token:"



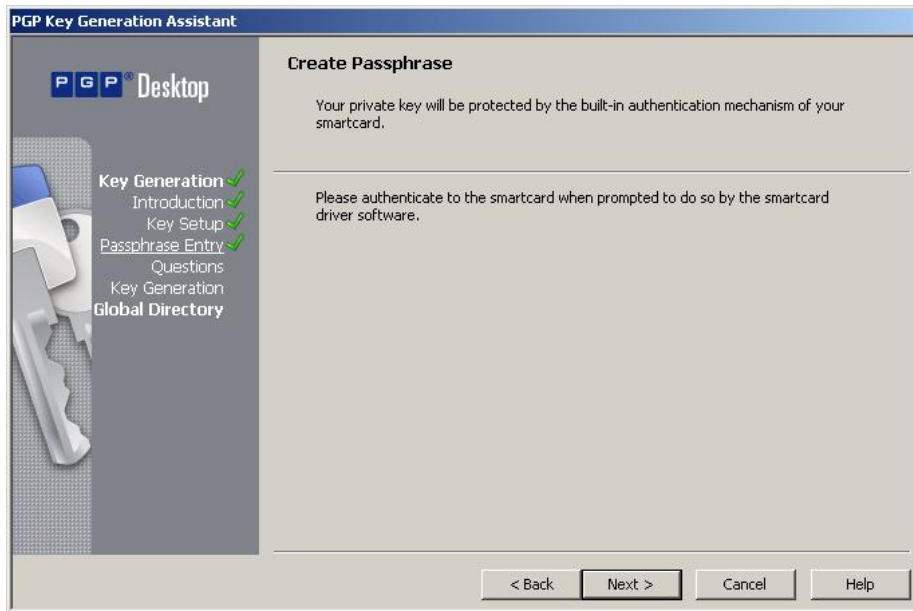
3. Leave the default settings and click the Next button.



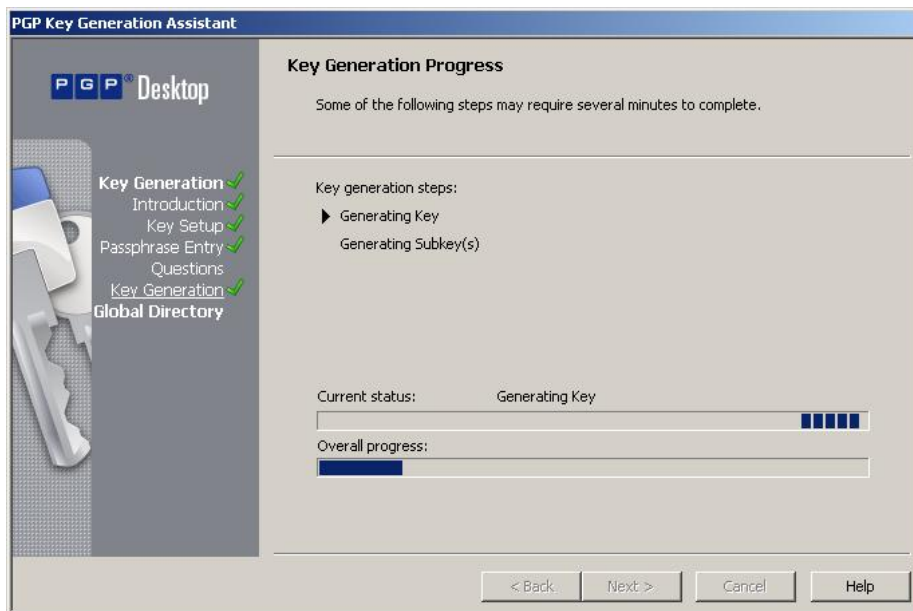
4. Select the Yes button to continue without entering an email address.



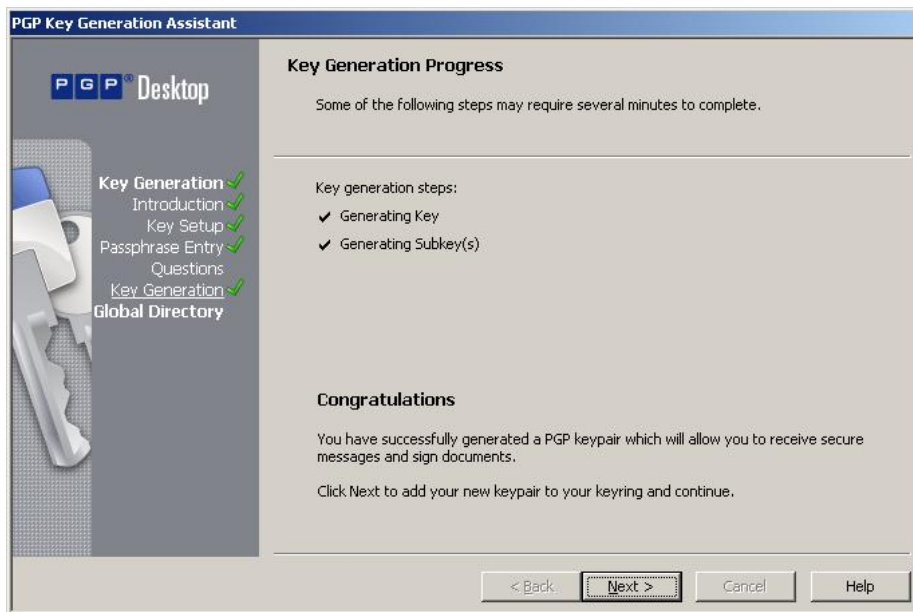
5. Select the Next button to create the passphrase, after selecting the Next button you will be prompted to enter the security code for the token.



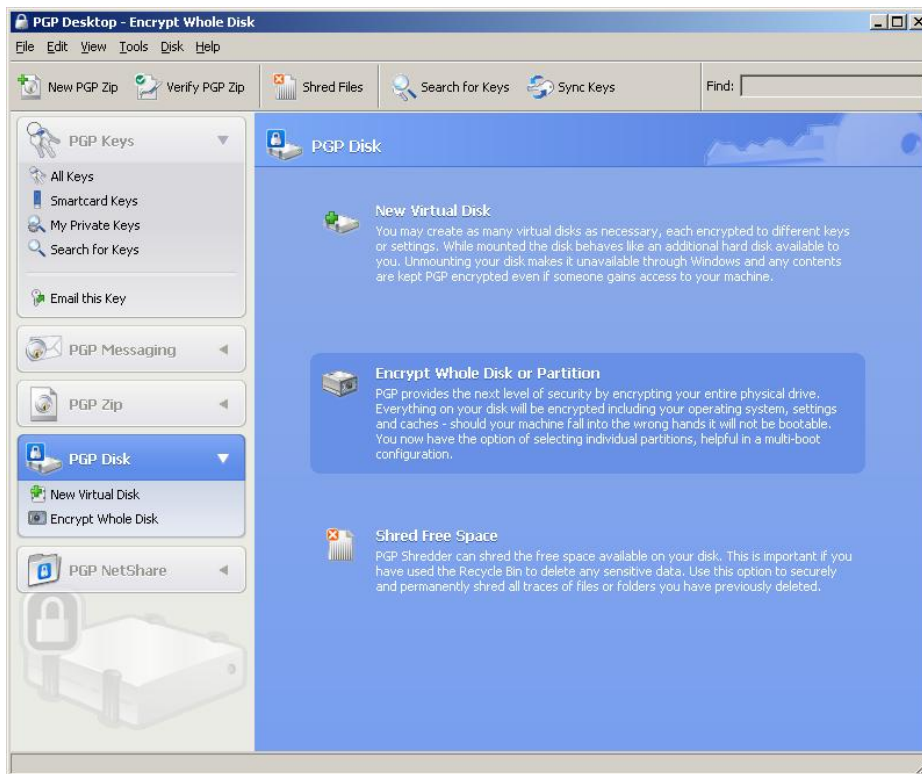
6. Once you have entered the security code for the token, PGP starts to generate the key and write it to the token.



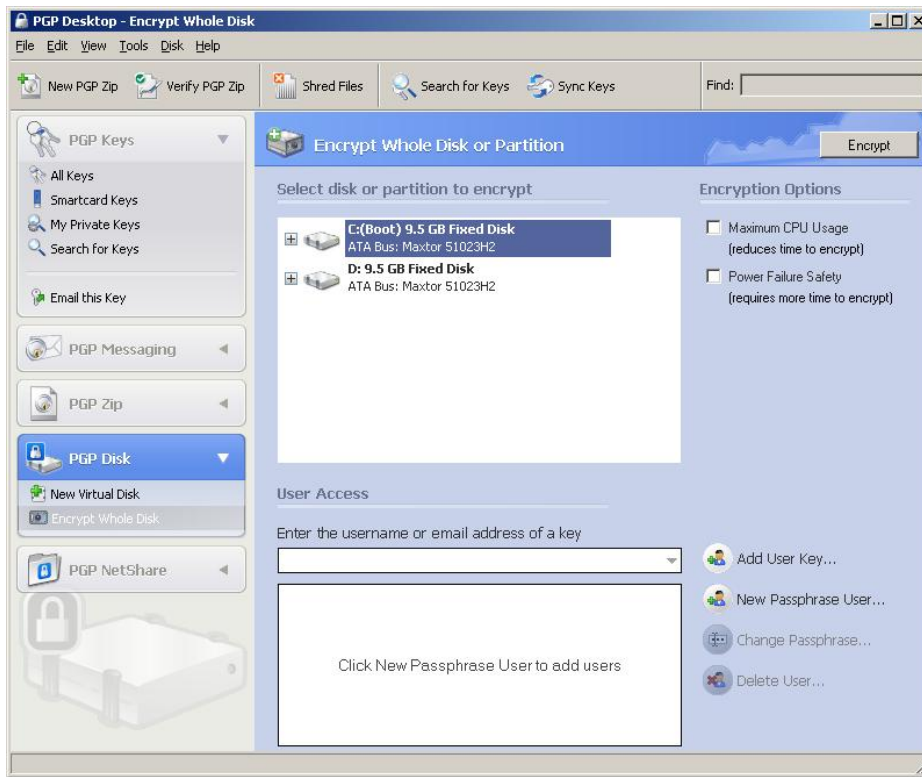
7. Upon completion of the key generation select Next.



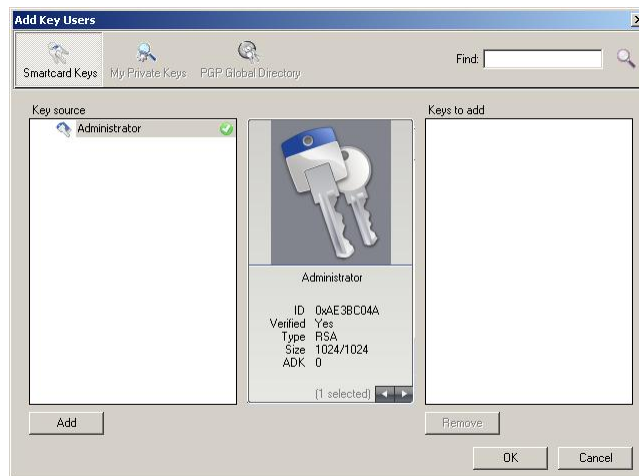
8. Skip the option for Global Directory Assistant and proceed to encrypting the disk. Select PGP Disk from the PGP Desktop and select Encrypt Whole Disk or Partition.



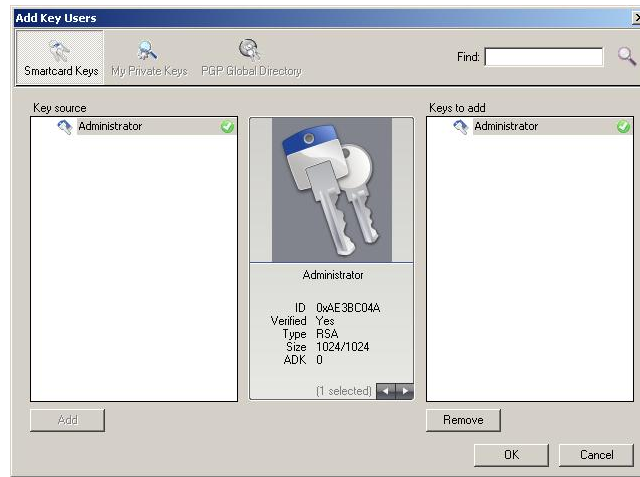
9. Select the Add User Key from the PGP Encrypt Whole Disk or Partition menu.



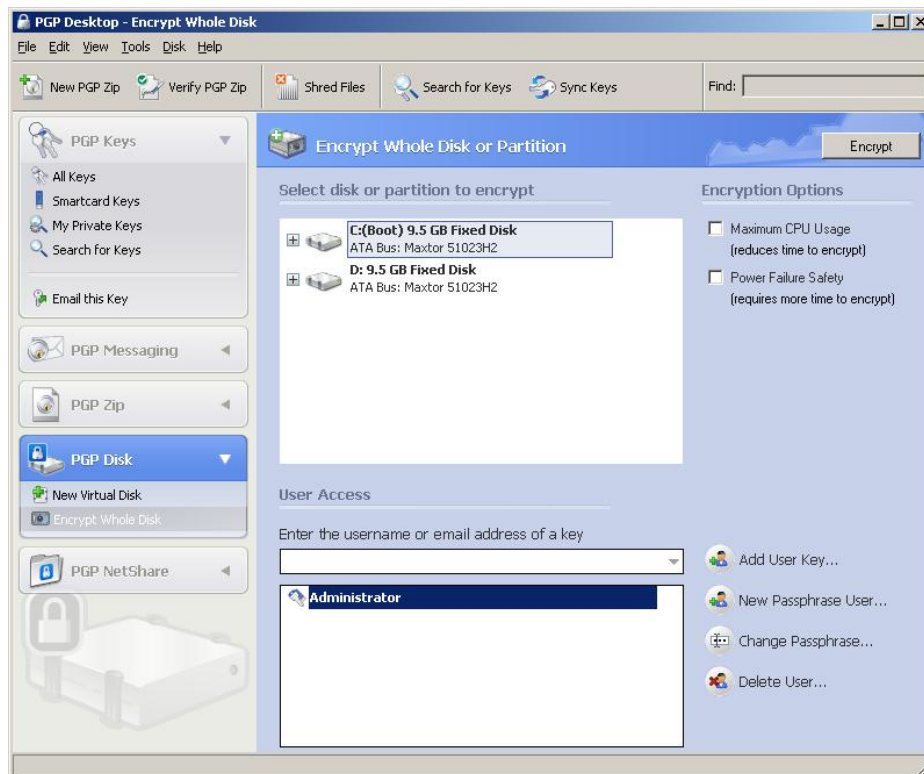
10. Add the account created and listed in the Key source list to the Keys to add.



11. Once the key source has been added the account will appear in the Key to add column. Select OK to continue.



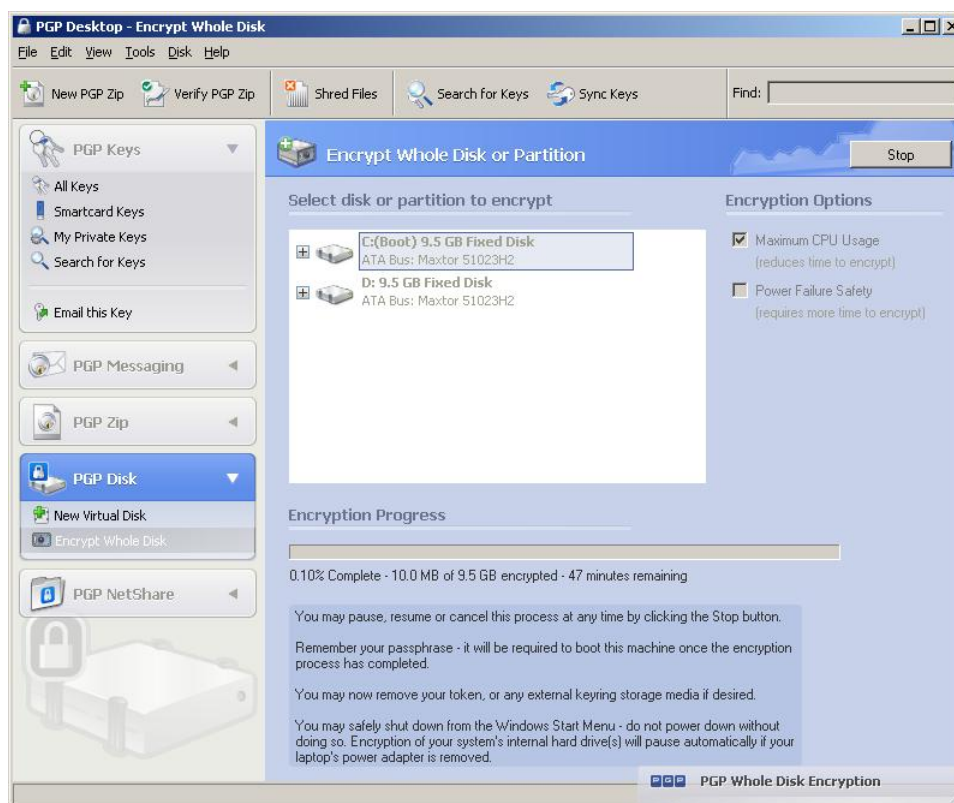
12. Select the user from the list and the Encrypt button to start the disk encryption.



13. Confirm the disk encryption request by selecting Yes to begin the process.



14. The following screen depicts the encryption of the drive.



15. Once the disk is encrypted reboot the system. The PGP Desktop Pre-Boot environment may require you to use the CTRL-R key sequence to access the correct login prompt to access the token.

Certification Checklist for 3rd Party Applications

Date Tested: March 12, 2008

Product	Operating System	Tested Version
RSA Authentication Client	Windows XP SP2	2.00
PGP Desktop Whole Disk Encryption	Windows XP SP2	9.8

Pre-boot Authentication	Result
SID800 (Combination Token)	✓
5200 (Smartcard w/SCR 331 reader)	N/A

DRP

✓ = Pass ✗ = Fail N/A = Non-Available Function

Known Issues

During the certification testing of the PGP Desktop Whole Disk Encryption product an issue was identified with PKI support. The information regarding this issue has been reported to PGP and is being evaluated by PGP. For additional information on PKI support please contact PGP.